

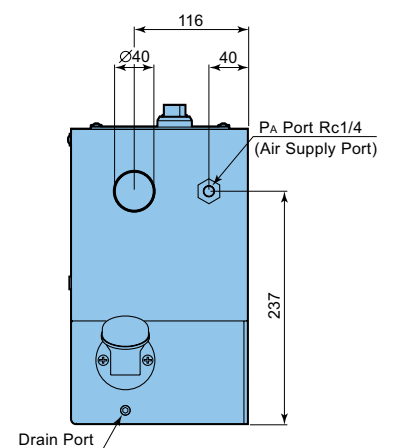
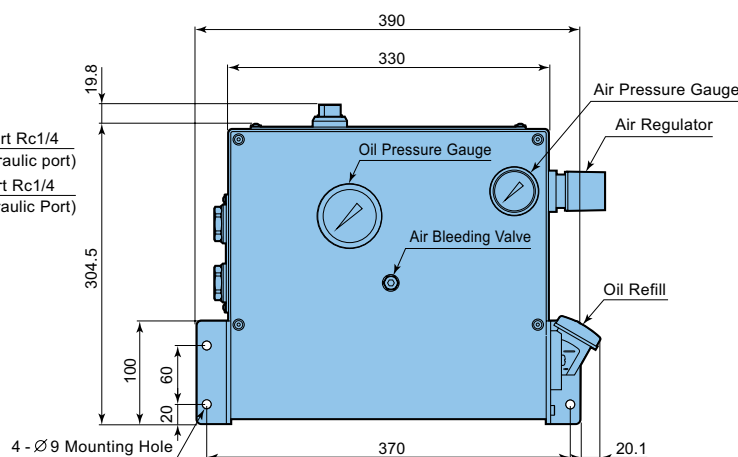
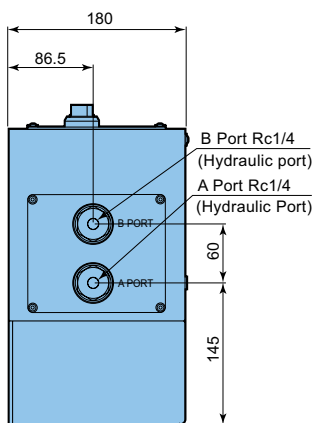
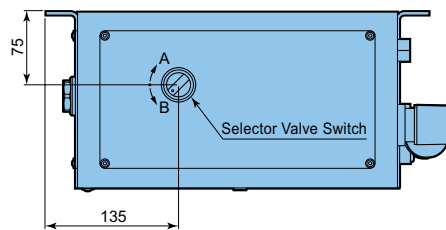
An air-driven & manual operation Control unit combining PASCAL pump (air-driven hydraulic pump) and valve with non-leak function which is indispensable for hydraulic clamping. Controlling 2 hydraulic circuits alternately, most suitable power source for double action clamp.

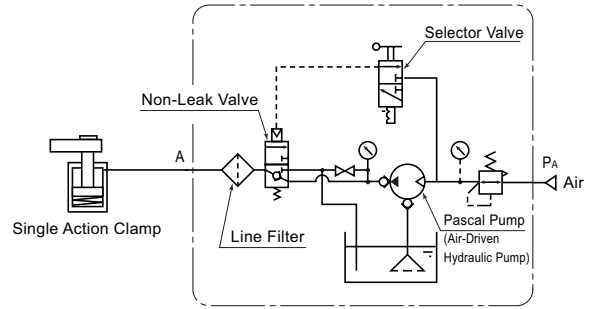
PASCAL pump will stop the action when the circuit pressure goes up to the designated pressure, and keeps it. As there will be no temperature change in operating oil, no need to have a supplement hydraulic equipment. After separating from hydraulic source, if you need to keep the pressure for a long period, or if there is a large fluctuation in environment temperature, PASCAL accumulator model WPB or WPC should be put in the clamp circuit.

Model	HCD4-W
Type of PASCAL pump	HPH6312P
Discharge Hydraulic Pressure	3.5 ~ 10.6 MPa ※
Driving Air pressure	0.20 ~ 0.50 MPa
Discharge Rate at no load	3.0 ℓ / min (At 0.5MPa Air Pressure)
Oil Tank Capacity	3 ℓ
Ambient Temperature	5 ~ 60 ° C
Fluid Used	ISO-VG32 equivalent normal operation oil
Mass	24 kg

※ If discharge hydraulic pressure is exceeding this range, ask us for details.

model **HCD4-W** Control Unit for Double Action Clamp





An air-driven & manual operation Control unit combining PASCAL pump (air-driven hydraulic pump) and valve with non-leak function which is indispensable for hydraulic clamping.

PASCAL pump will stop the action when the circuit pressure goes up to the designated pressure, and keeps it. As there will be no temperature change in operating oil, no need to have a supplement hydraulic equipment. After separating from hydraulic source, if you need to keep the pressure for a long period, or if there is a large fluctuation in environment temperature, PASCAL accumulator model WPB or WPC should be put in the clamp circuit.

Model	HCD4-S
Type of PASCAL pump	HPH6312P
Discharge Hydraulic Pressure	3.5 ~ 10.6 MPa ※
Driving Air pressure	0.20 ~ 0.50 MPa
Discharge Rate at no load	3.0 ℓ / min (At 0.5MPa Air Presse)
Oil Tank Capacity	3 ℓ
Ambient Temperature	5 ~ 60 ° C
Fluid Used	ISO-VG32 equivalent normal operation oil
Mass	22 kg

※ If discharge hydraulic pressure is exceeding this range, ask us for details.

model **HCD4-S** Control Unit for Single Action Clamp

