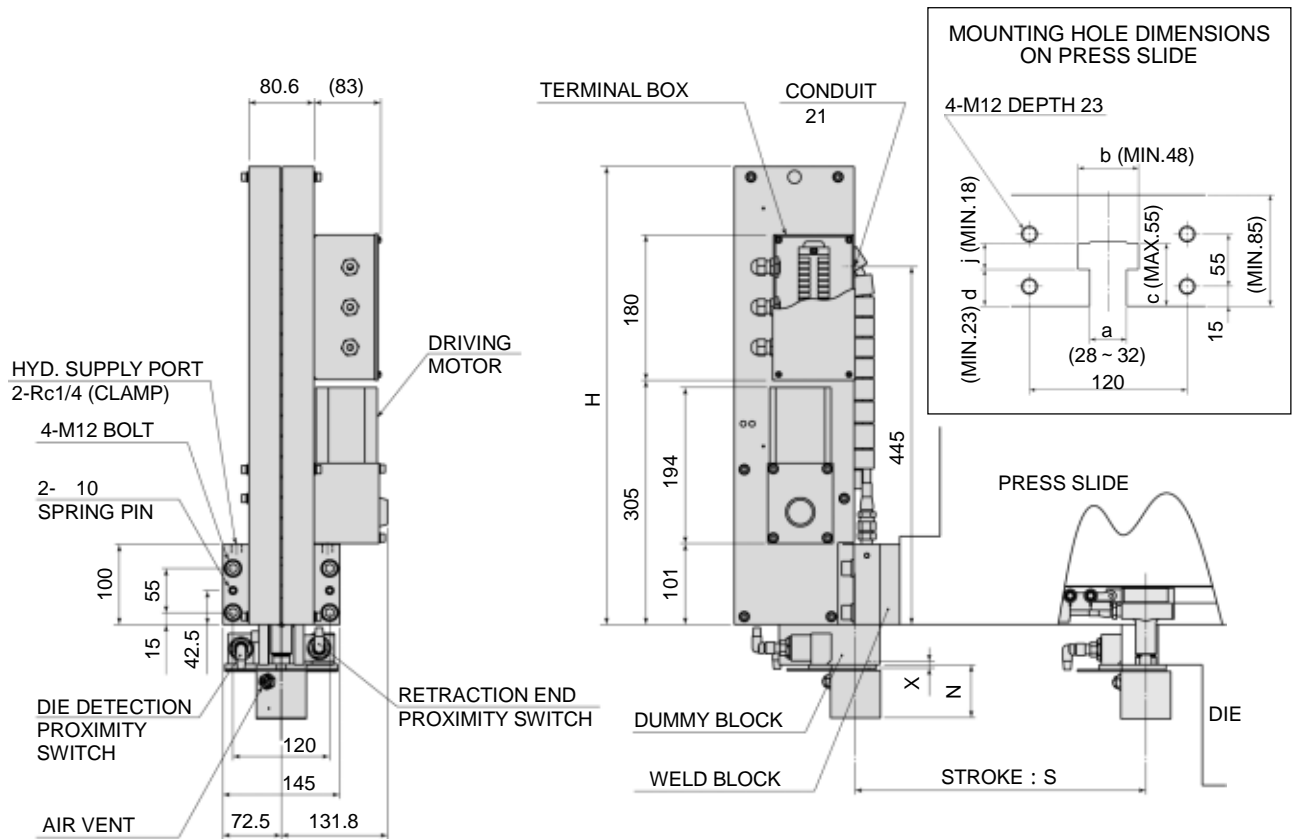
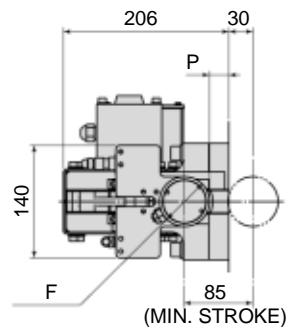


DIMENSIONS



(mm)

STROKE : S	H	STROKE : S	H
~ 400	520	625 ~ 700	670
425 ~ 500	570	725 ~ 800	720
525 ~ 600	620	825 ~ 900	770



SPECIFICATIONS

CLAMP MODEL	TXD 4	TXD 6	TXD 10	
CLAMPING FORCE *1	4 tonf { 39.2 kN, 4.41 USton }	6.3 tonf { 61.7 kN, 6.94 USton }	10 tonf { 98.0 kN, 11.0 USton }	
CLAMPING STROKE : X	8 mm (Full Stroke)			
SLIDING STROKE : S	400 ~ 900 mm, every 25 mm			
SLIDING FORCE *2	18 kgf { 177 N }			
SLIDING SPEED	4 ~ 6 m / min			
DIMENSIONS	F	62 mm	78 mm	98 mm
	N	67.2 mm	73.2 mm	79.2 mm
	P	24 mm	16 mm	6 mm

* 1: Hydraulic pressure 250 kgf/cm² { 24.5 MPa, 3560 psi }

* 2: Air pressure 4 kgf/cm² { 0.39 MPa, 57 psi }