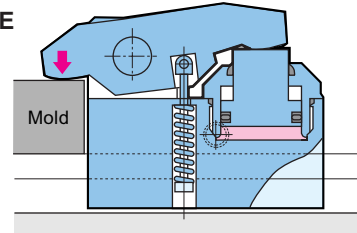


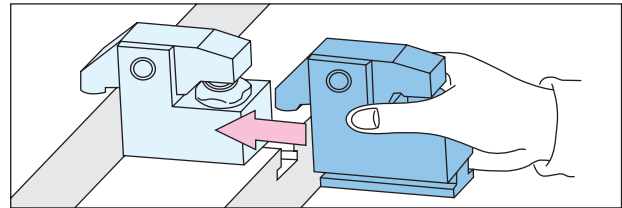
Model TYA is a lever clamp designed to be inserted to T-slot of platens. It has a large fixing force with shock-proof rigidity as well as long fixing stroke.



STRUCTURE



APPLICATION EXAMPLE



SPECIFICATIONS (TYA)

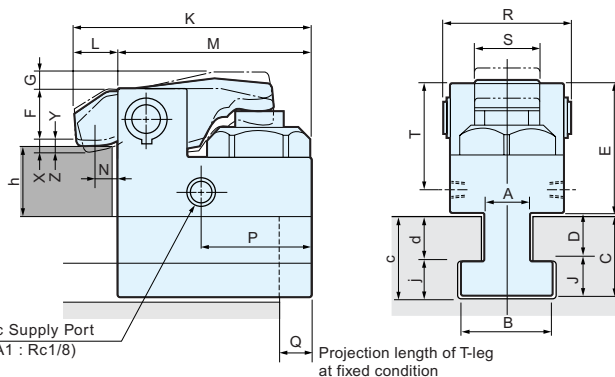
MODEL	TYA1	TYA2	TYA4	TYA6	TYA10	TYA16	TYA25
Fixing Force At hydraulic pressure 24.5MPa (kN)	9.8	19.6	39.2	61.7	98	157	245
Full Stroke : X (mm)	6	7	7	8	8	8	8
Fixing Stroke : Y (mm)	3	4	4	5	5	5	5
Safety Stroke : Z (mm)	3	3	3	3	3	3	3
Cylinder Capacity At Full Stroke (cm ³)	2.4	6.3	13.2	22.3	37	61	93
Weight (kg)	1	3	4.5	9	15	25	35

■ Proof pressure : 36.7MPa ■ Working temperature range : 0~70°C (5~120°C by heat proof type)

※ Fixing stroke and safety stroke shown above are the standard. Special type is available at option.

※ Weight varies according to the dimension of T-leg as well as h.

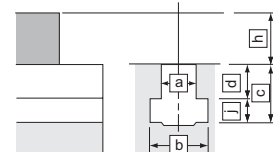
DIMENSIONS



Hydraulic Supply Port
(only TYA1 : Rc1/8)

Projection length of T-leg
at fixed condition

Specify t-slot dimensions (a,b,c,d,j) and workpiece height (h) when ordering.



● About "d" dimension

1. When in stalling on existing machine, specify in 0.1 mm resolution for us to design.

2. When installing on new machine, you need to machine the platen with the machining tolerance of ± 0.2 mm.

● Dimensions A,B,C,D,J shall be determined according to T-slot dimensions.

● When newly machining T-slot, it is recommended to apply the dimensions specified on page 4.

(mm)

MODEL	F ※1	MAX.G	K	L	M	N	P	MAX.Q ※3	R	S	T	MIN.E	MIN.J	h=MIN-MAX. ※2	MIN.a
TYA1	16.5 (25 ≤ h)	6	73	15	58	10	31	18	43	20	34.5	44.5	7	15~50	10
	21.5 (20 ≤ h (25))														
	26.5 (16 ≤ h (20))														
TYA2	17.5 (32.5 ≤ h)	10	101	18	83	12.5	41	22	58	28	43	54	8.5	22.5~50	12.5
	22.5 (27.5 ≤ h (32.5))														
	27.5 (22.5 ≤ h (27.5))														
TYA4	27.5 (38 ≤ h)	10	143	23	120	16	55	32	73	40	57.5	69.5	10.5	28~50	15
	32.5 (33 ≤ h (38))														
	37.5 (28 ≤ h (33))														
TYA6	29.5 (47 ≤ h)	10	163	30	133	20	51	36	93	50	68.5	81.5	14	27~60	19
	39.5 (37 ≤ h (47))														
	49.5 (27 ≤ h (37))														
TYA10	45 (57 ≤ h)	11	195	30	165	20	62	45	104	55	97	107	16	37~70	23
	55 (47 ≤ h (57))														
	65 (37 ≤ h (47))														
TYA16	60 (67 ≤ h)	12	230	30	200	20	80	55	125	60	120	132	19	47~80	27
	70 (57 ≤ h (67))														
	80 (47 ≤ h (57))														
TYA25	76 (87 ≤ h)	13	270	30	240	20	90	69	155	72	156	168	22	67~80	32
	86 (77 ≤ h (87))														
	96 (67 ≤ h (77))														

※ F will be decided according to the dimension of h (mold thickness). If h dimension is shorter than the minimum figure of F, the product will be treated as special type.

※ If h dimension is larger than the maximum figure, the product will be also treated as special type.

※ There are cases when the projection length of T-leg exceeding the Max. Q figure may be used according to the T-slot dimensions. In such case, ask us for details.