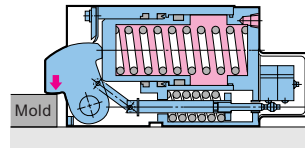


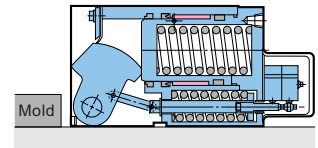
Model TME is a retractable lever type clamp and ensures sufficient mold holding force by a heavy duty spring even at the oil pressure failure.



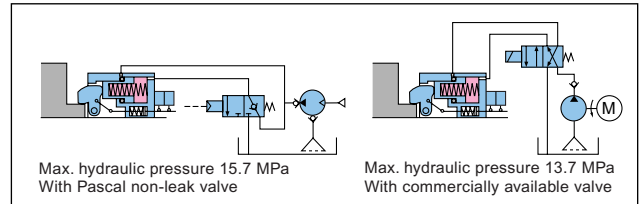
FIXED



UNFIXED



CIRCUIT DIAGRAM



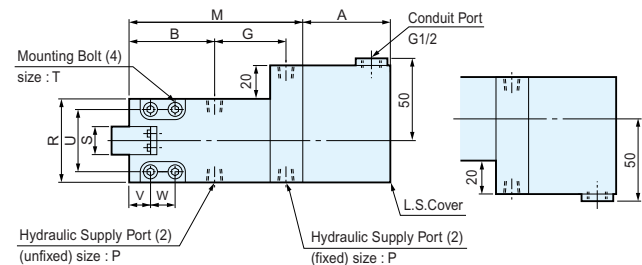
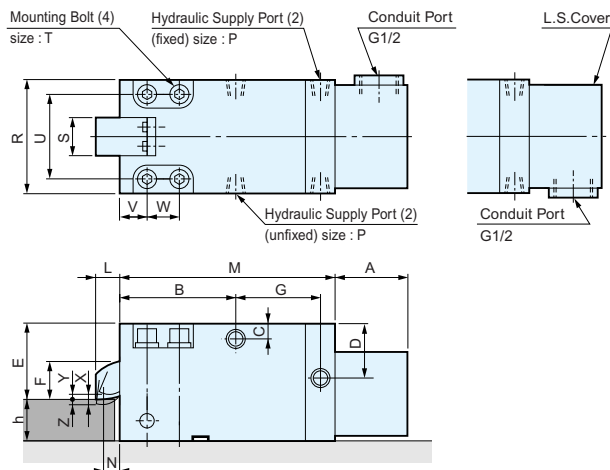
SPECIFICATIONS (TME L-)

MODEL		TME1L	TME2.5L	TME4L	TME6L	TME10L	TME16L
Fixing Force (kN)	At Max. hydraulic pressure	9.8	24.5	39.2	61.7	98	157
Holding Force (kN)	At Max. hydraulic pressure	9.8	24.5	39.2	61.7	98	157
	At no hydraulic pressure (0MPa)	0.49	0.98	1.56	2.45	3.92	5.88
Full Stroke : X	(mm)	3.5	4	4	4	4.5	4.5
Fixing Stroke : Y	(mm)	2	2	2	2	2	2
Safety Stroke : Z	(mm)	1.5	2	2	2	2.5	2.5
Cylinder Capacity	Fixed (cm ³)	15	41	92	163	298	470
	Unfixed (cm ³)	6	11	28	48	87	143
Weight	(kg)	3	6	9	15.5	30	55

■ Proof pressure : 20.5MPa ■ Working temperature range : 0~70°C (5~120°C by heat proof type)

※ The hydraulic pressure required to unclamp is 2.9 MPa.

DIMENSIONS TME 2.5~16L- TME 2.5~16L- TME 1L- TME 1L-



MODEL	E	F	G	L	M	N	R	S	U	V	W	T	h (※)	A	B	C	D	P
TME1 L	42	21	56	11	121.5	9	52	18	38	12	18	M 8	MIN.20	59.5	55.5	11	23.5	Rc1/8
TME2.5L	56	30	65.5	16	149.5	12	78	27	58	17	22	M10	MIN.30 (25)	59.5	74	15	31	Rc1/4
TME4 L	76	39	80	19	180	14.5	88	35	68	20	26	M12	MIN.30 (25)	59.5	89	20	39	Rc1/4
TME6 L	90	43	86	21	197	15	108	45	84	22	30	M14	MIN.35 (30)	59.5	99	24	48	Rc1/4
TME10 L	112	57	100.25	25	238.5	19	135	55	106	30	36	M18	MIN.40 (35)	64	121.25	30.5	61	Rc3/8
TME16 L	137	78	108.5	32	285	20	182	72	135	40	50	M24	MIN.40	68.5	156.5	38.5	62	Rc3/8

※ Dimensions h in parentheses are special specifications.