

Model VSE is a valve unit containing the modules such as Pascal valve with special non-leak function, pressure relief valve and pressure switch, etc. Model VSE is particularly designed with its high reliability for the application in injection molding machines.



SPECIFICATIONS (VSE [Symbol]-3 [Circuit symbol] - N : NPT port)

MODEL		VSE [Symbol]-3CSSK-N
Hydraulic pressure (from injection molding machines)		1987(2262) psi
Set pressure of pressure switch (increase)		1276 psi
Maximum working pressure		2988 psi (at pilot air pressure 71 psi)
Orifice area	P → A	0.01953 in ²
	A → R	0.03007 in ²

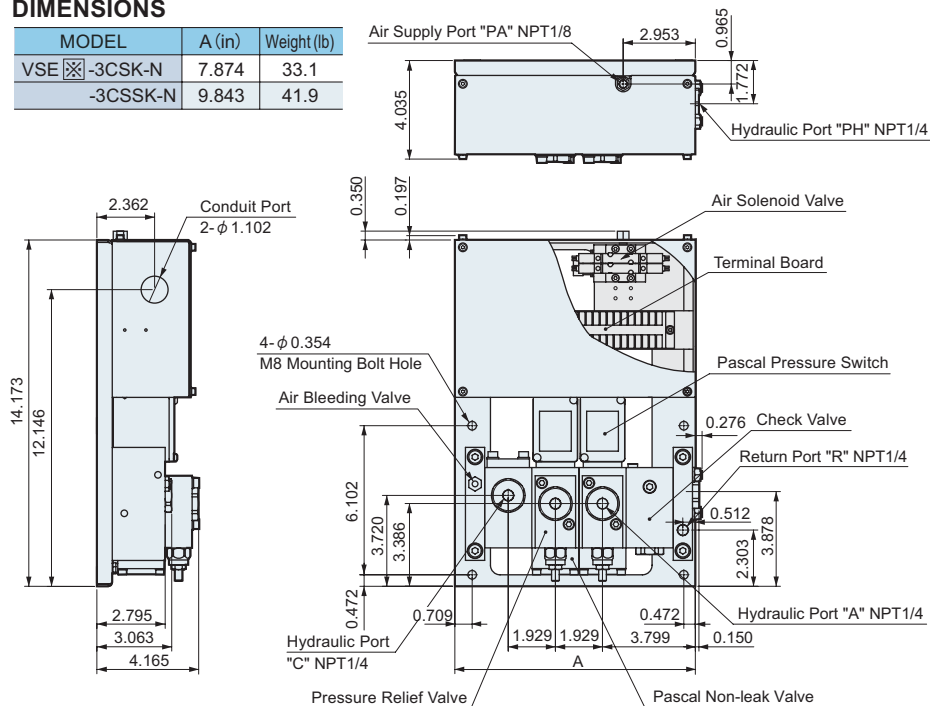
- Fluid used : ISO-VG32 equivalent mineral oil
- Working temperature range : 41~122°F
- When applying a Pascal pump as power source, model name becomes VSB [Symbol]-3 [Circuit symbol] - N : NPT port
- 2262 psi is when the clamp model TME is used.

[Symbol] Electrical power voltage shall be specified as per the following classifications.

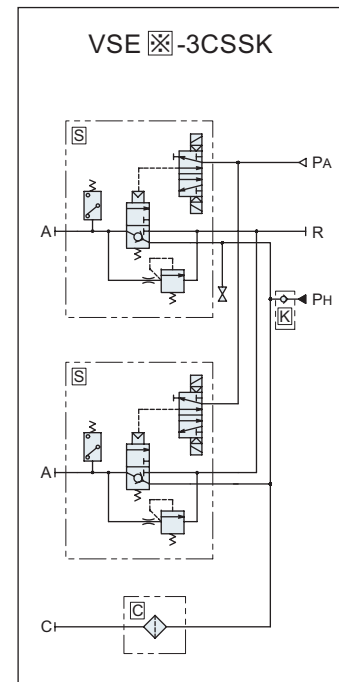
A	AC100V
B	AC200V
C	AC110V
D	DC 24V
E	AC220V

DIMENSIONS

MODEL	A (in)	Weight (lb)
VSE [Symbol]-3CSK-N	7.874	33.1
-3CSSK-N	9.843	41.9



CIRCUIT DIAGRAM



Hydraulic circuit specifications		Symbol
C port with inline filter		C
C port with pressure gauge for incoming pressure		Q
Pressure gauge for incoming pressure		E
C port with pressure switch for incoming pressure		H
Clamp circuit	Single solenoid (D circuit)	D
	Double solenoid (L circuit)	L
	D circuit with relief valve for excessive high pressure	X
	L circuit with relief valve for excessive high pressure	S
Check valve		K

For the detail of hydraulic circuit and options, ask us separately.