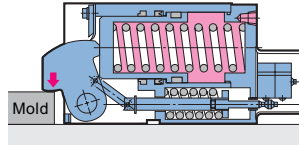


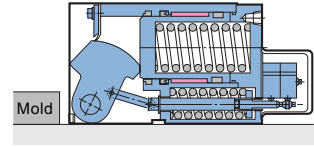
Model TME is a retractable lever type clamp and ensures sufficient mold holding force by a heavy duty spring even at the oil pressure failure.



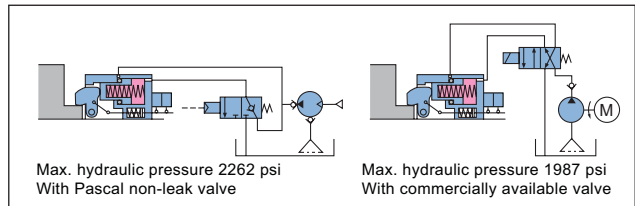
### FIXED



### UNFIXED



### CIRCUIT DIAGRAM



### SPECIFICATIONS ( TME [size] L - [h dimension] [L,R : direction of conduit port] [N : NPT port] )

MODEL		TME1L	TME2.5L	TME4L	TME6L	TME10L	TME16L
Fixing Force (US ton)	At Max. hydraulic pressure	1.1	2.7	4.4	6.9	11.0	17.6
Holding Force (US ton)	At Max. hydraulic pressure	1.1	2.7	4.4	6.9	11.0	17.6
	At no hydraulic pressure (0 psi)	0.055	0.11	0.17	0.27	0.44	0.66
Full Stroke : X	(in)	0.138	0.157	0.157	0.157	0.177	0.177
Fixing Stroke : Y	(in)	0.079	0.079	0.079	0.079	0.079	0.079
Safety Stroke : Z	(in)	0.059	0.079	0.079	0.079	0.098	0.098
Cylinder Capacity	Fixed (in <sup>3</sup> )	0.92	2.50	5.61	9.95	18.19	28.68
	Unfixed ※ (in <sup>3</sup> )	0.37	0.67	1.71	2.93	5.31	8.73
Weight	(lb)	6.6	13.2	19.8	34.2	66.1	121.3

■ Proof pressure : 2973 psi    ■ Working temperature range : 32~158°F

※ The hydraulic pressure required to unclamp is 420 psi.

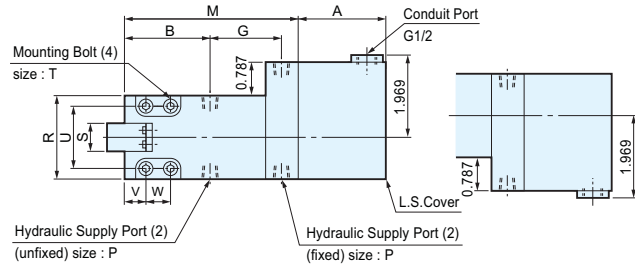
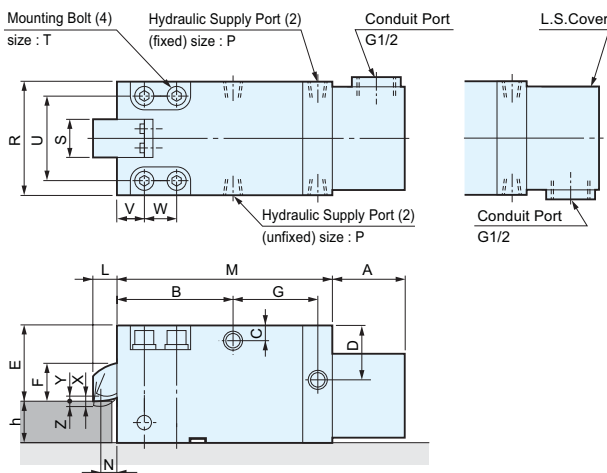
### DIMENSIONS

TME 2.5~16L- $\square$ h RN

TME 2.5~16L- $\square$ h LN

TME 1L- $\square$ h RN

TME 1L- $\square$ h LN



### LIMIT SWITCH SPECIFICATION (YAMATAKE)

Limit Switch Model	BZ-2RD3000-T4-J
Rated Voltage	AC250V DC30V
Rated Current (Resistance Load)	15A 15A

(in)

MODEL	E	F	G	L	M	N	R	S	U	V	W	T	h (※)	A	B	C	D	P
TME1 L	1.654	0.827	2.205	0.433	4.783	0.354	2.047	0.709	1.496	0.472	0.709	M 8	MIN.0.787	2.343	2.185	0.443	0.925	NPT1/8
TME2.5L	2.205	1.181	2.579	0.630	5.886	0.472	3.071	1.063	2.283	0.669	0.866	M10	MIN.1.181(0.984)	2.343	2.913	0.591	1.220	NPT1/4
TME4 L	2.992	1.535	3.150	0.748	7.087	0.571	3.465	1.378	2.677	0.787	1.024	M12	MIN.1.181(0.984)	2.343	3.504	0.787	1.535	NPT1/4
TME6 L	3.543	1.693	3.386	0.827	7.756	0.591	4.252	1.772	3.307	0.866	1.181	M14	MIN.1.378(1.181)	2.343	3.898	0.945	1.890	NPT1/4
TME10 L	4.409	2.244	3.967	0.984	9.390	0.748	5.315	2.165	4.173	1.181	1.417	M18	MIN.1.575(1.378)	2.520	4.774	1.201	2.402	NPT3/8
TME16 L	5.394	3.071	4.272	1.260	11.220	0.787	7.165	2.835	5.315	1.575	1.969	M24	MIN.1.575	2.697	6.161	1.516	2.441	NPT3/8

※ Dimensions h in parentheses are special specifications.